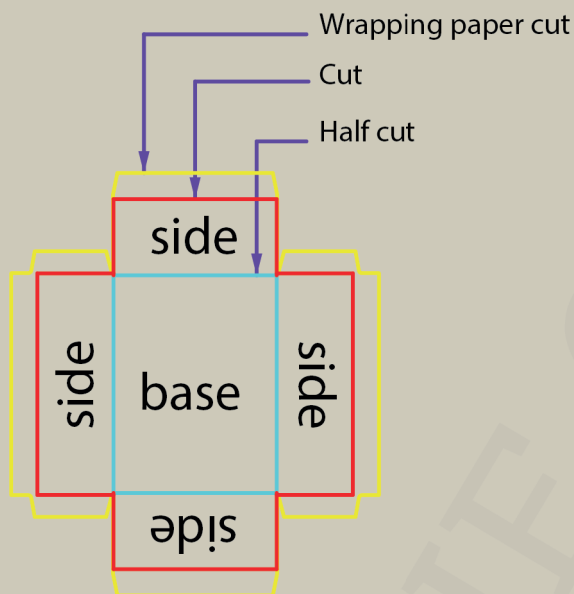
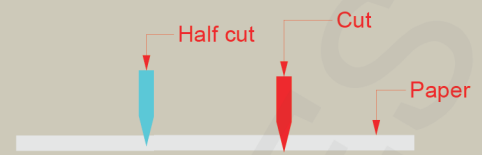


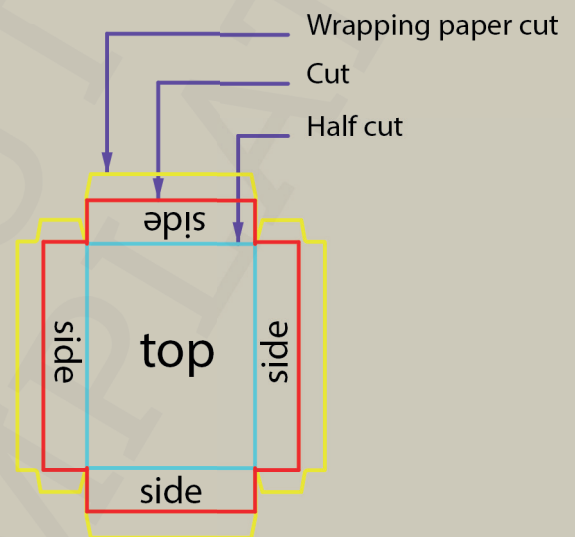
# Setup Document

## Hard Cardboards | Covered Solid Board Boxes | becf-30101

- Wrapping paper
- Hard cardboard cut
- Hard cardboard half cut



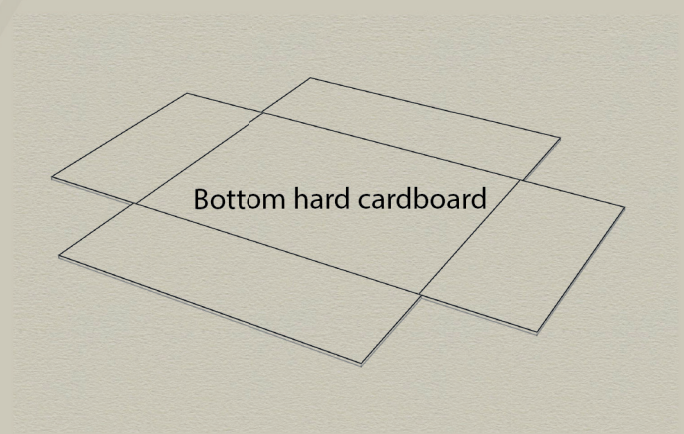
Bottom box



Cover



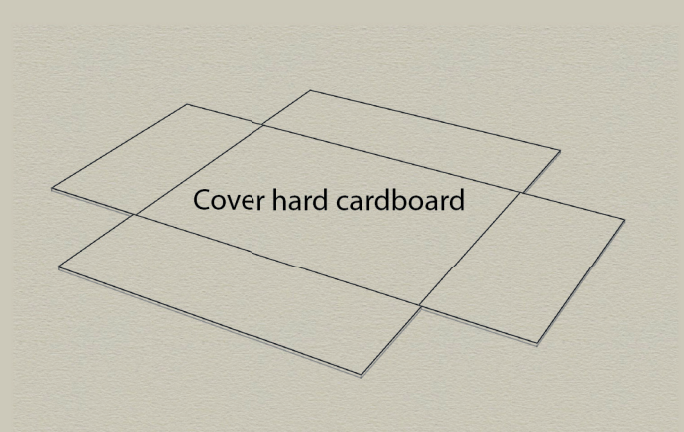
Bottom wrapping paper



Bottom hard cardboard



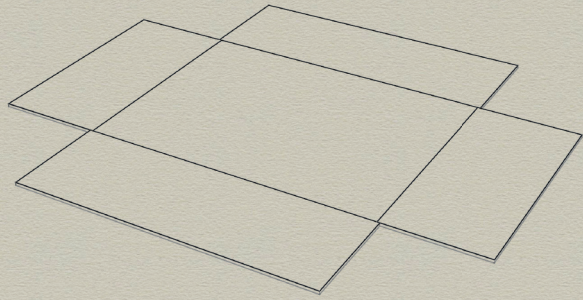
Cover wrapping paper



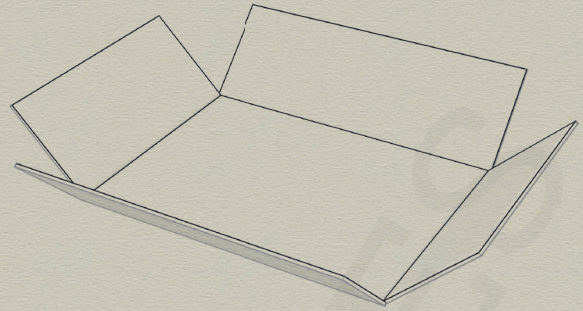
Cover hard cardboard



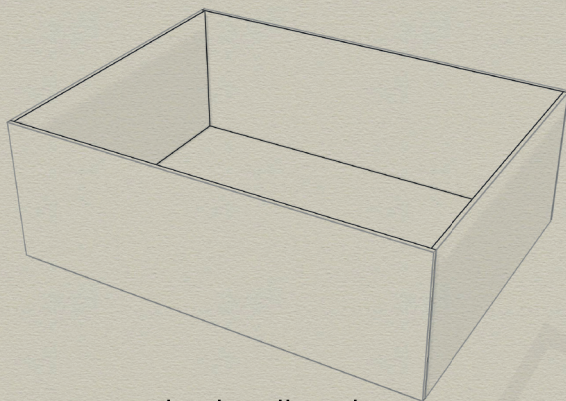
Place the cardboard with the inner side facing outwards.



Fold the flaps outwards

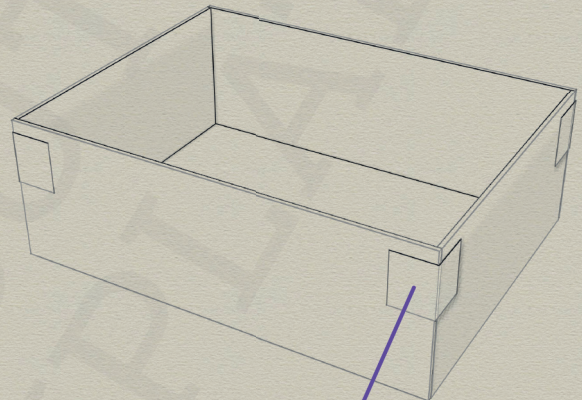


Fold them until the corners meet.



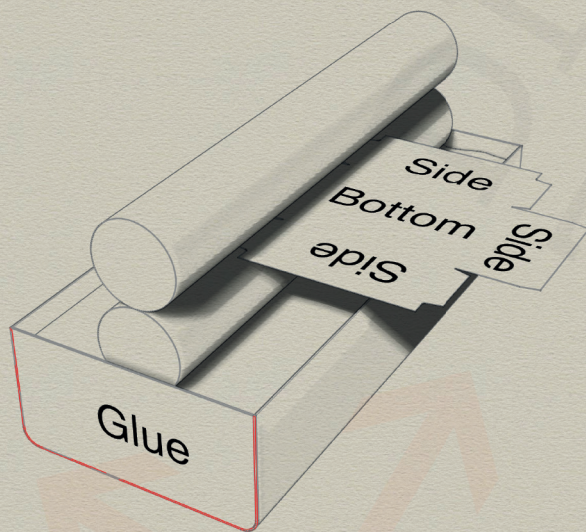
Bottom hard cardboard

Tape the corners.



glue band

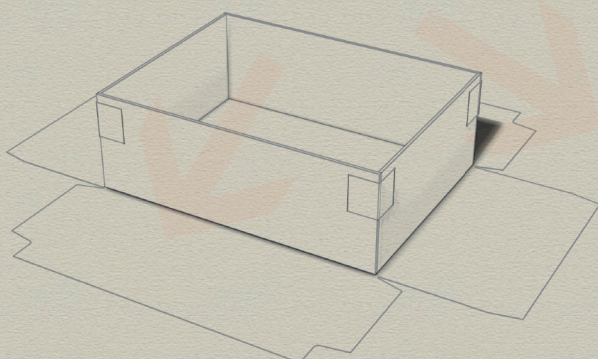
Glue the wrapping paper.  
Make sure side with the glue is facing outwards.



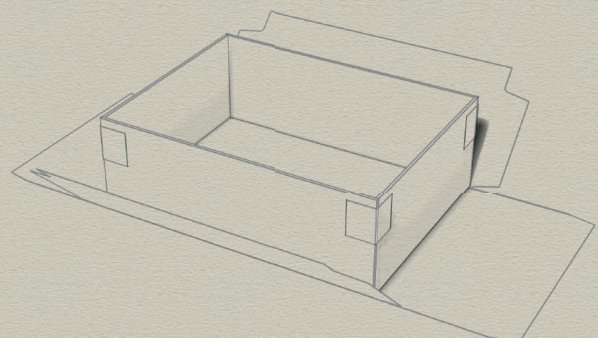
glue face

Bottom wrapping paper

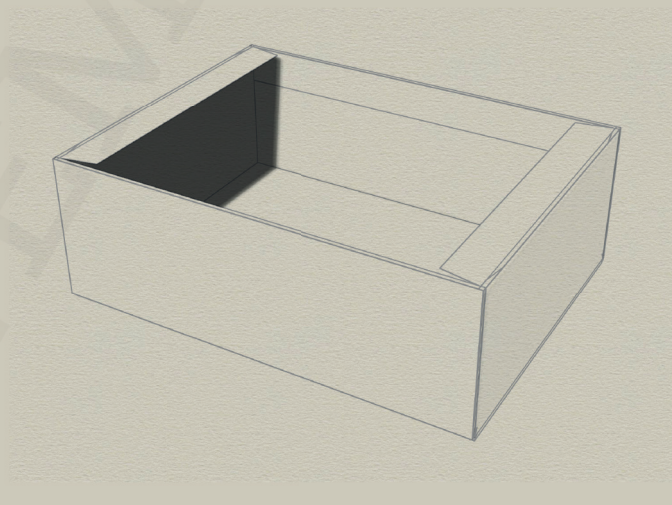
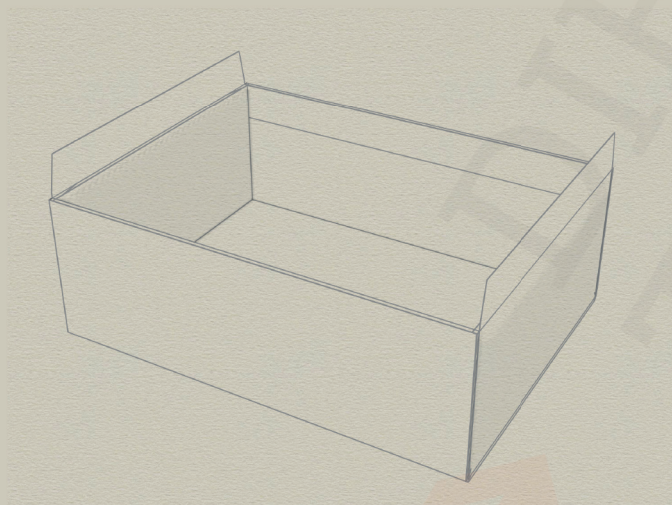
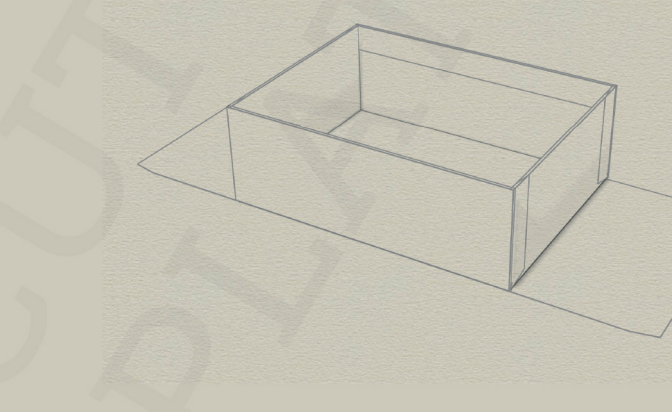
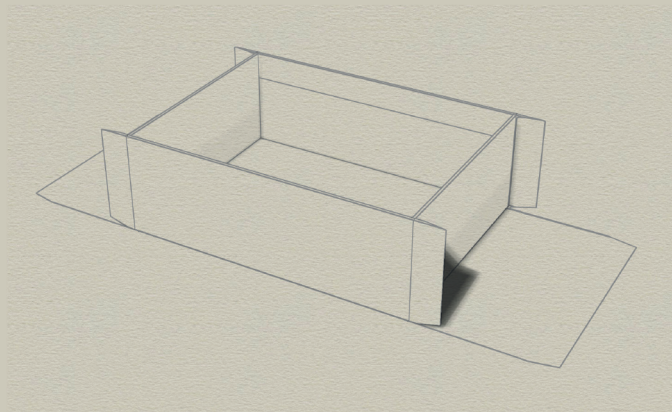
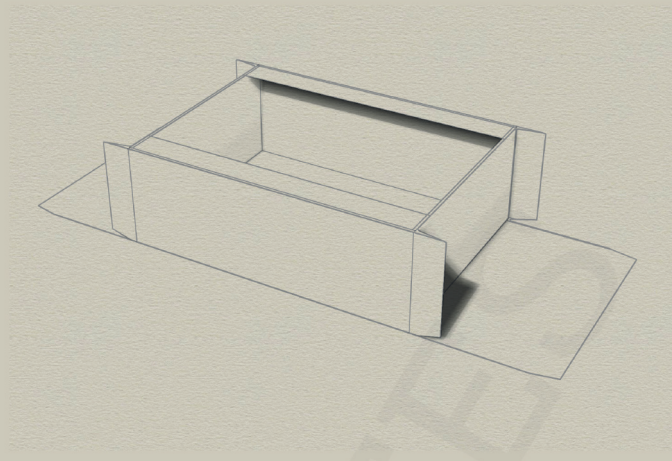
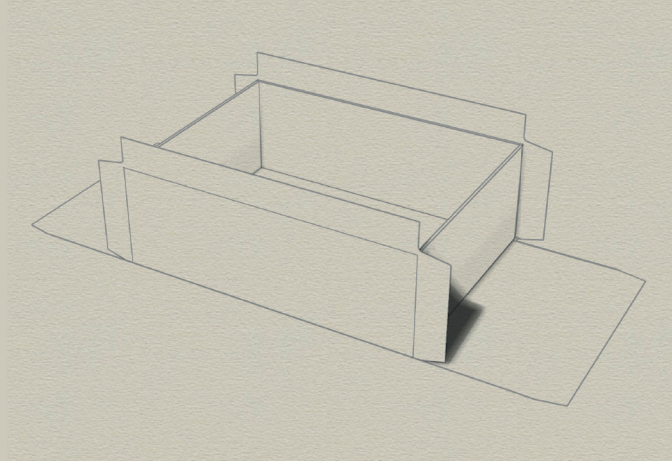
Place the cardboard in the centre.



Glue the sides one by one.







Repeat the steps for the cover.

